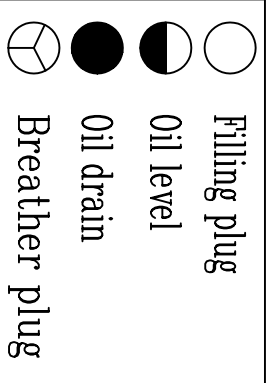
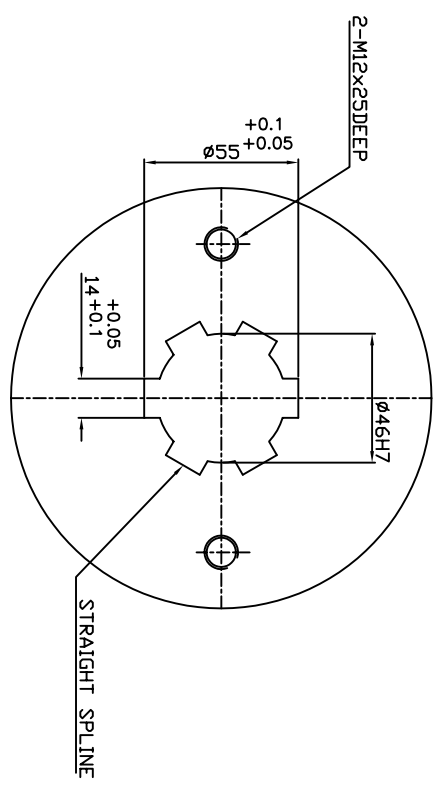
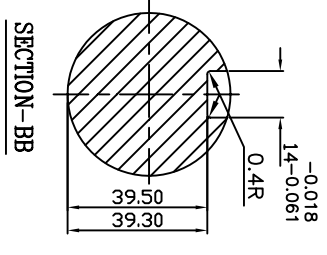


SR.NO	DESCRIPTION	NOMINAL RATIO	ACTUAL RATIO	NOMINAL POWER	RPM	QTY.
1	XC20-R11-H11-R10-Z3-424	10:1	10.5:1	185 KW	1500	1
2	XC20-R11-H11-R14-Z3-424	14:1	14.3:1	132 KW	1500	1
3	XC20-R11-H11-R18-Z3-424	18:1	18.4:1	103 KW	1500	1

NOTE:
 SHAFT ENDS WITH KEYS ACCORDING TO DIN 6885, PART-1, SHAPE-A.
 SHAFT CENTERING ACCORDING TO DIN - 332 DS WITH THREADS.
 DIRECTION OF ROTATION OF OUTPUT SHAFT LOOKING TOWARDS ITS ENDS.
 DIMENSIONS CERTIFIED FOR CONSTRUCTION.
 APPROX. TOTAL WEIGHT WITHOUT OIL - 400 KGS.
 REQUIRED APPROX. OIL QUANTITY PER GEAR BOX : 23LTRS.
 LUBRICATING OIL: SERVOMESH SP 320 OR EQUI.



PERMISSIBLE DEVIATION FOR UNMACHINED LINEAR DIMENSIONS:

0.5-8	8-30	30-120	120-400	400-1000	1000-2000
± 0.1	± 0.2	± 0.3	± 0.5	± 0.8	± 1.2

RANGE OF LENGTHS:

0-10	10-30	30-100	100-300	300-1000	1000-2000
± 0.1	± 0.15	± 0.2	± 0.3	± 0.5	± 0.8

PERMISSIBLE DEVIATION OF ANGULAR DIMENSIONS (shorter side of angle):

1°	1°-5'	5'-10'	10'-15'	15'-20'	20'-30'
± 1'	± 1'	± 2'	± 3'	± 4'	± 5'

ISSUE	DATE	AMENDMENTS	SCALE
A	01/04/08	DRAWING CHANGED AS PER CLIENT REQUIREMENT.	
B	10/04/08	DRAWING CHANGED AS PER CLIENT REQUIREMENT.	

DRAWN: *Mhendra* 21.2.07
 CHK. BY: *N. G. Pandey* 21.2.07
 DATE: 21.2.07
 APPROVED: *N. G. Pandey* 21.2.07
 DATE: 21.2.07

ORDER NO. SENMAK
 DIMENSION SHEET FOR XC20-R11-H11-Z3-424
 DRG. NO: 516-00-1211
 ISSUE