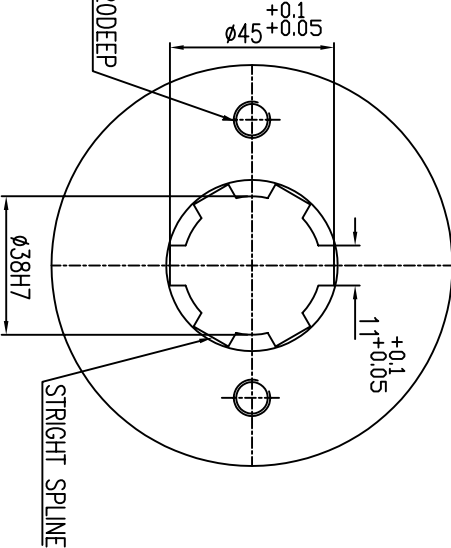


SECTION-BB

2-M10x20DEEP

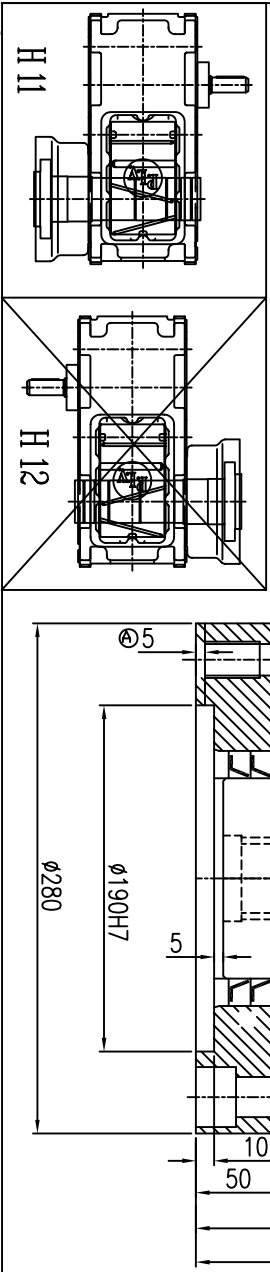
INSIDE DESIGN OF HOLLOW SHAFT



VIEW ON-A

NOTE:
 SHAFT ENDS WITH KEYS ACCORDING TO DIN 6885, PART-1, SHAPE-A.
 SHAFT CENTERING ACCORDING TO DIN - 332 DS WITH THREADS.
 DIRECTION OF ROTATION OF OUTPUT SHAFT LOOKING TOWARDS ITS ENDS.
 DIMENSIONS CERTIFIED FOR CONSTRUCTION.
 APPROX. TOTAL WEIGHT WITHOUT OIL - 150 KGS.
 REQUIRED APPROX. OIL QUANTITY PER GEAR BOX : 8 LTRS.
 LUBRICATING OIL: SERVOMESH SP 320 OR EQUI.

SR.NO	DESCRIPTION	NOMINAL RATIO	ACTUAL RATIO	NOMINAL POWER	RPM	QTY.
1	XC14-R11-H11-R10-23-418	10:1	10.1:1	51 KW	1500	1
2	XC14-R11-H11-R14-23-418	14:1	14.5:1	37 KW	1500	1
3	XC14-R11-H11-R18-23-418	18:1	17.8:1	28 KW	1500	1



SR.NO	DESCRIPTION	NOMINAL RATIO	ACTUAL RATIO	NOMINAL POWER	RPM	QTY.
1	XC14-R11-H11-R10-23-418	10:1	10.1:1	51 KW	1500	1
2	XC14-R11-H11-R14-23-418	14:1	14.5:1	37 KW	1500	1
3	XC14-R11-H11-R18-23-418	18:1	17.8:1	28 KW	1500	1

PERMISSIBLE DEVIATION FOR UNMACHINED LINEAR DIMENSIONS:	0.5-6	6-30	30-120	120-400	400-1000	1000-2000
± 0.1	± 0.2	± 0.3	± 0.5	± 0.8	± 1.2	± 1.5

- Filling plug
- ◐ Oil level
- Oil drain
- ⊕ Breather plug

DIMENSION SHEET FOR
 XC14-R11-H11-23-418

PERMISSIBLE DEVIATION OF ANGULAR DIMENSIONS (Shorter side of angle)

RANGE OF LENGTHS:	0-10	10-30	30-120	120-400	400-1000
± 1°	± 1°	± 1°	± 1°	± 1°	± 1°

THIS DRG. IS PROPERTY OF ELECON ENGG.CO.LTD., LOANED TO THE RECIPIENT WHO AGREES THAT IT SHOULD NOT BE GIVEN OUT COPIED OR REPRODUCED FOR THE USE OF OTHERS BUT ONLY USED BY THE RECIPIENT FOR THE PURPOSE OF MAINTAINING THE EQUIPMENT TO WHICH IT RELATES.

ELECON DRG. NO: 516-00-1208 ISSUE

516-00-1208

ORDER NO. SENMAK

SCALE: 1

APPROVED: 17.2.07

CHK. BY: 17.2.07

DATE: 17.2.07

APPROVED: 17.2.07

DATE: 17.2.07

DRAWN: 17.2.07

DATE: 17.2.07

100408 DRAWING CHANGED AS PER CLIENT REQUIREMENT.

010408 DRAWING CHANGED AS PER CLIENT REQUIREMENT.

5552405